

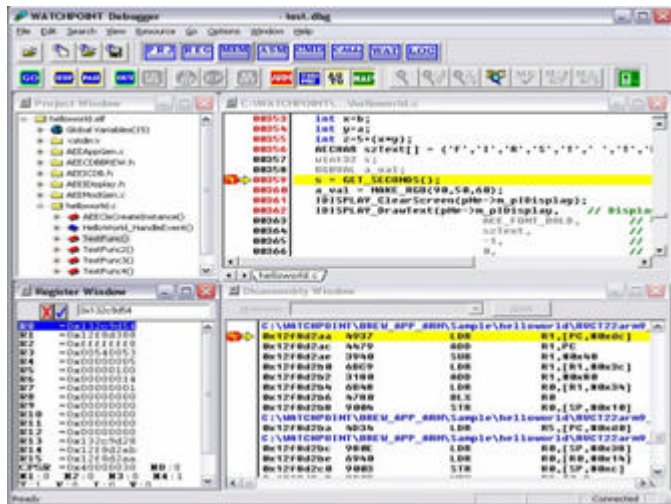


# WATCHPOINT™ Debugger for BREW® Applications

## Overview

The WATCHPOINT™ Debugger for BREW® Apps has the ability to debug for a better understanding of the actual handset behavior regarding timing, interrupts, memory & hardware resources.

Using WATCHPOINT, you can debug applications at Source Code Level via cooperation with the Component Services Debugger (CDB) on the portable(mobile) terminal.



## Features:

- Debugging at Source Code Level
- Program execution via Step in, Step out, Pass Step, GO execution, and COME execution.
- Software breakpoints  
Setting/Unsetting, Automatic position correction.
- Refer to internal Registers
- Refer and change of software variables  
Inspect and view variables, including local variables.
- Memory operations can  
Reference/change, copy, fill, etc.

## Selection Guide

## Configuration

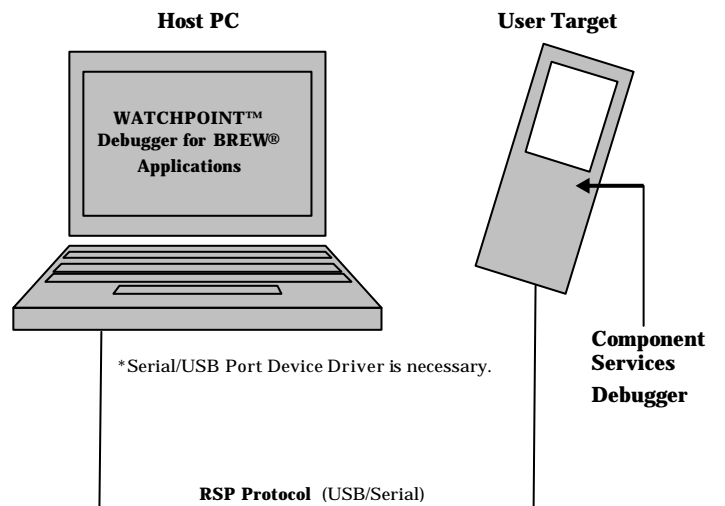
Item No.	Product Name	Supported compilers
U12470*	WP Debug for BREW® Apps.	GCC3.2.1, ADS1.2, RVCT2.1/2.2
U12471*	WP Debug for BREW® Apps. DNGL	<same>

- \* BREW® is a registered trademark of QUALCOMM Incorporated in the United States and may be registered in other countries.
- \* PC license(U12470) or DNGL -USB Key license(U12471) available.
- \* The forced break function is limited by the BREW® debugger extension spec.
- \* Contact Sophia Systems to get the latest WATCHPOINT updates for Vista.

### Necessary hardware and software for debugging

The following hardware and software items are necessary for debugging with WATCHPOINT:

- PC WindowsXP SP2.0, Vista\*
- BREW SDK 4.0.1; BREW SDK Tools 1.1.1 or later
- BREW Tools Suite 3.1.1 or later
- CDB 1.1.1 Portable terminal, or later
- USB/serial driver which can support a portable terminal
- USB cable which can connect with a portable terminal
- Network environment



Contact : Sophia Systems USA office :  
[www.sophiasys.com](http://www.sophiasys.com)  
 or otherwise,  
[www.sophia-systems.com](http://www.sophia-systems.com)