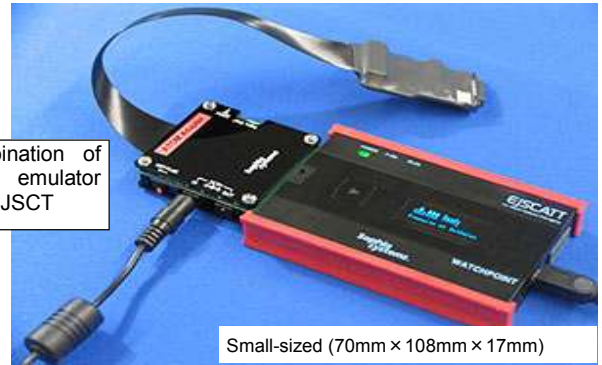
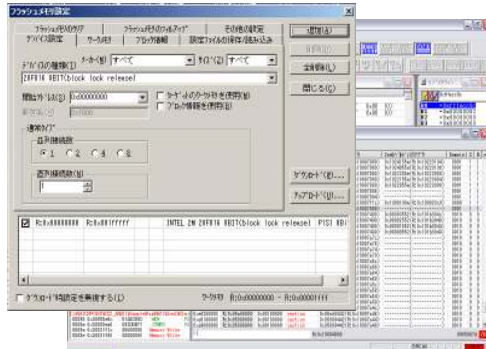


WATCHPOINT Debugger for EJSCT ATOM



Combination of JTAG emulator and EJSCT

Small-sized (70mm × 108mm × 17mm)

Features

- ◆ Able to add support CPU series one by one by same hardware.
- ◆ Write to Onboard or CPU internal flash memory
- ◆ Stand-alone Flash writing without PC¹. (via AC adaptor)
- ◆ Able to write data by one touch PLAY bottom.
- ◆ Able to use for update and test mass-production
- ◆ Support Intel Atom processor.
- ◆ Support hot plug
- ◆ Docking window
Helpful for extension of debugger operation space.
- ◆ Supports C/C++ high level language
- ◆ OS²: Windows2000/XP/Vista/7
- ◆ Work on each PC³, note PC etc. (connect with USB)

Specification

Target CPU	Supports Atom Z500,Z510,Z515,Z520,Z530,Z540,Z550 Atom 230 * Atom N270,N280 Schedule Atom N450 *,N470 *Atom D410 * Atom Z600,Z605,Z610,Z612,Z615,Z620,Z625 Atom E620T,E640T,E660T,E680T,E620,E640,E660,E680 * Does not support 64bit
Target Vcc	VCC1.0~1.1V
Memory & I/O	Entire space is available to the User.
Interrupts	Both internal and external interrupts are available to the User.
Breakpoints & Break Options	Hardware breakpoints: Max: 4points*, specify command address, and memory access • Software breakpoint: Unlimited (Able to specify RAM and flash memory) • Other forced break for debug. Forced break from external input terminal *Entire 1point of hardware breakpoint when use the below function. Software breakpoint PASS step/Step OUT/COME
Flash Memory	1. Download a User program directly to the target's external Flash memory. 2. High-speed downloading using the target's memory resources.

*1 Customize program is necessary for writing part of flash memory (serial, NAND etc.)
*2 Can support Windows XP Professional x64Edition(64 bit) and Windows Vista/ 7(64bit).
*3 Please confirm operation for a part of model beforehand.

Configurations

The below parts are packaged together.



CD-ROM



ATOM adaptor



Cable for stand alone

*This product is just for support ATOM processor, impossible to write other CPU flash memory.

Supported Language:

The program information is necessary for high level language by [WATCHPOINT]. The below language*1 is included in C compiler and assembler.

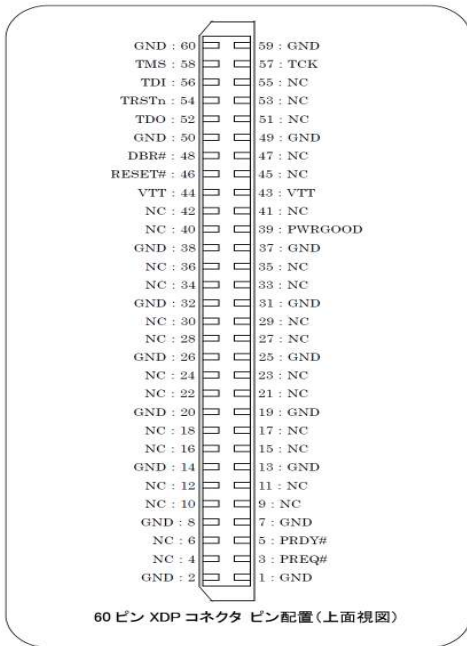
- GNU
- Intel Intel®Atom™ processor
- Intel® embedded software development tool, suite

Supported OS:

- Linux
- *Please inquiry for co * nfirm supported compiler and ver, etc.
- *Please inquiry the language Ver for confirm supported OS.
- *Please inquiry the option software is necessary or not for supported OS.

Target Connect

Use JTAG connector



Recommended connector
BSH-030-01-L-D-A
(Samtec)

WATCHPOINT Software license

WATCHPOINT Debugger for EJSCT is using license system. Customer can get license by accessing Sophia System website. Then H/W will create new license file automatically. Transfer the license file to PC. One H/W can support/get universal WATCHPOINT license.
*WATCHPOINT license just can work with related JTAG emulator. Please purchase other S/W for get new license if customer would like to use with other JTAG emulator.

Selection guide

Customer has to prepare		Necessary product for standard DEBUG system			Option
Host PC*1	Connect PC	JTAG	WATCHPOINT Debugger (software)	Support service	Add-in software (option software)
DOS/V and NOTE PC (IBM PC/AT compatible machine)	Connect USB2.0/1.1	SCD001 EJSCT	SCM0910 WP DBG for EJS ATOM	SSSEN Sophia support service	U42499E WP4LKG

The product enclosed with **thick fence** is necessary for instruct standard debug system. JTAG emulator works as H/W for S/W debug license. Impossible to make combination with other JTAG emulator after supply anyone license.

**1 Host PC environment, OS: Windows XP/2000, and Vista .
Memory: Based on each OS standard , HD: 100MB for installation.

(MKT-24VIR22)

* All other brands and product names are trademarks or registered trademarks of their respective companies.
* All configurations are subject to change without notice.

Please inquiry to below Dept.

International Sales: +81-44-989-7253

Please inquiry the price:

- SCD001 EJSCT
- SCM0910E WATCHPOINT Debugger for EJSCT ATOM E
- SSSEN Sophia Support Service (12 months)